

GRACE NOTES



Grace Baptist Church of Blue Bell
437 Skippack Pike & Lewis Lane, P.O. Box 122 Blue Bell, PA 19422
Volume XXXI , Number 10
October 2012 Newsletter

Grace Baptist Church of Blue Bell is a Christ-centered community sharing God's love with the world.

Sunday Schedule

9:30am Small Groups
10:45am Worship

Office Hours

Monday
9:00am-12:00pm
Tuesday-Friday
9:00am-1:00pm

Church Staff

George M. Hawthorne
Minister
ghawthorne@gbcb.org

Barbara Green
Director of Music/Organist

Casey Stauffer
Director of Children & Family Ministries
cstauffer@gbcb.org

Trish Simpson
Administrative Assistant
staff@gbcb.org



Join your Grace Baptist Church family for our third year of FAITH IN ACTION on 10.14.12. We will focus on reaching out to serve our community as we invite a friend, co-worker or family member to work alongside us.

Be a part of a landmark day in Grace Baptist's history when for the third year, we cancel all worship services and instead go worship through service in the community. We will be serving through projects designed to directly touch lives and reflect Christ's love to others in our community.

Our entire congregation is focusing on service during Sunday morning small group studies as well as sermons.

Sign up directly with the team leader or by adding your name to the project list located in the church narthex. There is a project for every member of our church family and we are expecting 100% participation!

Faith In Action Projects:

Whitpain Township Parks and Recreation

Leader: Harold Mathues
Location: Wentz Run Park and Township Building

10.14.12 Grace Baptist Church Reaches Out to Serve the Community

Time: 9am till 2pm (or a portion of the hours)

Volunteers: minimum needed 25-30

Activities: Park maintenance along with cleaning and restoring the park after the Harvest Festival Celebration.

Family Friendly

Visit to Shut Ins – church members and community residents

Leader: Linda Allmond

Location: Various

Time: TBD

Volunteers: Need minimum of 8 teams of 2 people

Activity: Visit shut ins their homes, hospital or retirement community and take gift bags. Each team will make 2 visits.

Family Friendly

Breakfast For the Needy

Leader: Bob Stremme,

Location: Saint Augustine of Hippo Episcopal Church, Norristown PA

Time: 7am – 9:30am

Volunteers: 10 MAXIMUM

Activity: Work with established program that reaches out to the homeless and hungry of Norristown.

(continued on next page)

(Faith in Action—continued from first page)

Prepare and serve breakfast to approximately 90 people.
Bring apron.

Inside Church Project

Leader: Valerie King
Location: Grace Baptist Church
Time: 9:30-12:00
Volunteers: Unlimited
Activity: Writing letters and drawing/coloring pictures to witness our faith and love.
Encouragement & thanks to our missionaries & shut-ins, servicemen currently serving, and veterans
Encouragement, hope and love to women (& children) who have suffered the agony of domestic violence and to hospitalized patients of all ages.

Family Friendly

Home Project

Leader: Harry Jenkins
Location: See Harry
Time: 9:00 till done
Volunteers: 15
Activity: Home repairs and landscaping clean up
Special Instructions: Bring water and lunch. See Harry for additional information.

Shady Grove Elementary School

Leader: Don & Nancy Hogeland

Location: Shady Grove (Lewis Lane and Skip-pack Pike)
Time: 9:30 till done
Volunteers: TBD
Activity: Clean out flower beds and prepare garden for Winter
Family Friendly

Whitpain Harvest Festival

Leader: Marjorie Scharpf
Location: Wentz Run Park, Saturday, Oct. 13
Time: 8am-5pm (time can be divided between participants)
Volunteers: TBD
Activity: Represent church at Whitpain Harvest Festival. Help children decorate cookies and hand out information on the church.
Let the community get to know GBCBB
Family Friendly

Each volunteer and guest will receive a Faith In Action T-shirt to wear while participating in their service project to let our neighbors know that Grace Baptist Church cares about them and our community.

Team members will also hand out invitations to our FIA Celebration during the 10:45 A.M. service on 10.21.12. Each team will share their experiences. All are invited to a celebration reception following worship.

DON'T JUST GO TO CHURCH—BE THE CHURCH during Faith in Action at Grace Baptist. For more information contact a project team leader or Betty Helpa.

Worship with us at 10:45 on Sunday mornings!

September 30—CATCH (Week 1)

“Becoming Relentlessly Outward Focused” Matthew 4: 18-22
Rev. Hawthorne preaching

October 7—CATCH (Week 2)

“Answering Three Important Questions” John 4: 13-14
Rev. Hawthorne preaching

October 14—Faith in Action Sunday

Day of Service—No worship service or Sunday School

October 21—CATCH (Week 3)

“Making Visitors Feel Welcome” - Romans 12: 11-13
Rev. Hawthorne preaching
Faith In Action Celebration Reception following worship

October 28—CATCH (Week 4)

“Inviting Others to Grow in Faith” - Romans 12: 1-8
Rev. Hawthorne preaching



WORLD MISSION OFFERING

Dear Sisters and Brothers in Christ,

Part of what it means to be a follower of Christ is to share the good news of Jesus not only in our neighborhood but also around the world. Each year, the World Mission Offering (WMO) provides an opportunity to understand what is happening worldwide through International Ministries (IM) and to support those important mission efforts.

United States and Puerto Rico churches and individuals gave \$3,041,000 last year to support the work of the Lord through American Baptist International Ministries' World Mission Offering. The largest portion, \$2,615,000, was used to support 100 IM missionaries serving around the world.

Funding through the WMO is very important. The vital combination of WMO giving, plus giving to IM for the personalized support of missionaries, covers IM's total annual missionary cost of \$6.75 million. Your missionaries are able to carry on the work of the Lord—thanks to you! And they are encouraged through your prayers and generous support of them through the WMO.

The remaining \$426,000 is being used to provide support for IM's global Christian partners and programs, including schools, seminaries and colleges, health clinics, agricultural projects, peace initiatives and ministry to victims of human trafficking. IM's partners thank for remembering the poor, the sick, the homeless and the heartbroken through your gifts to WMO.

This year's theme is "Hear the Call". You will remember the story of how God called Samuel to be his prophet. 1 Samuel 3:10 reminds us of our motivation to support mission efforts and become active in mission ourselves as we respond to God's call by saying, "Speak, for your servant is listening."

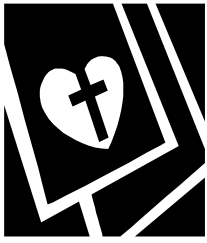
Our 2012 goal is **\$2,500**. We encourage you to embrace this challenge. We will be receiving the World Mission Offering on **October 7**. Please use the attached envelope to make your contribution.

Your servant,

Marjorie Scharpf, Chair, Board of Missions



INTERNATIONAL MINISTRIES
COME. GROW. CHANGE.



FROM THE PASTOR

Dear Friends,

By the time most of you read this, *Catch* will be up and running here at Grace! In case you haven't heard, *Catch* is a church-wide program for invitational evangelism that I believe will transform the way we think about making a difference in our community for Jesus Christ. The five-week *Catch* program (one week in the middle for Faith In Action) will introduce us to a new way of thinking about inviting others to Grace Baptist and incorporating them into the life and ministry of our church. I want to emphasize that *Catch* will not end at the completion of the five week period. We anticipate, rather, that after this introductory period, new programs and ministries and ways of doing things will be in place that will have a long-term effect on our church's outreach ministries.

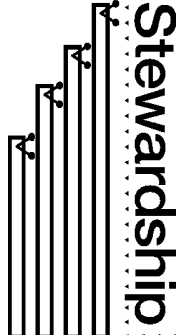
I hope you've signed up to participate in a small group. It will greatly enhance the program for you, and your input and participation is critical to the program's success. I want to especially thank those who have agreed to host a *Catch* small group either here at church or in their homes. They are Mike and Donna Sue Froman, Irene and Santosh Philips, Linda Dietch, and Ed and Kristen Paluszka. You may still sign up for one of these groups in the lobby of our church or by speaking to me or any of our group leaders.

I also want to say a word about last Sunday's business meeting after worship. As is usually the case, attendance at the meeting was not particularly inspiring, but the reports given were all very upbeat and hopeful. As was pointed out by those who gave reports, there are a lot of good things happening here at Grace. For example, our new Strategic Plan is now being implemented and soon we will begin seeing the effects of this broad-ranging and church-changing effort. Our new website is almost ready to be launched, and I'm very excited about the potential it has for telling more and more people about our church. (Thank you, Irene!) I also learned on Sunday that a large number of people from our church (including many who speak Spanish) are planning our next mission trip to Mexico.

I am truly grateful for all the leaders of our church and for all the positive work that is being done behind the scenes by so many. Of course, we need your help and your participation. It all begins with regular worship attendance and with your willingness to use your God-given gifts and talents to enhance the ministry we share.

Centered in Christ,

Pastor George

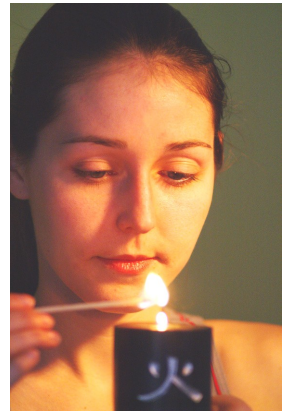
	UPDATE			
	(as of August 31, 2012)			
	August		YTD	
	Income	\$ 16,110.84	Income	\$ 200,832.56
	Expenses	\$ 27,362.27	Expenses	\$ 213,607.55

SHINE

We learn, we love, we serve others...and we have LOTS of fun doing it!!

For Grades 6th-12th

SHINE is a safe place for youth to come learn about God, His Word and His love. A place that is free from judgment where we can be silly or serious, thoughtful and quiet or loud and crazy—a place to be our true selves. A place where we will learn how to ignite our Jesus Light and let it shine on others.



What would I do at Youth Group?

So many things!! Each Sunday morning throughout the school year there is Sunday School before church. Additionally, we meet at least four times a month, but each week is a little different.

- ◆ Two times a month, we meet on Wednesday nights from 7:00-9:00 P.M. This is for both Middle School and High School students. We play as a group and then divide to study the Bible and have a lesson.
- ◆ At least one night a month there is a Game Night to come together and play all sorts of games and have lots of fun. A great opportunity to bring friends!
- ◆ BOSS trips. What is a BOSS trip? It's a Bus-O-Students-Serving. Each month we get on the bus, go out into our community and serve. It's a chance to *Shine* our light on others.
- ◆ Other things to look for...
 - Lock-ins
 - Retreats
 - Mission Trips
 - Random Fun—bowling, mini-golf, arcade trips, tubing...who knows what else!!

Welcome to Kristin Paluszka, our new Director of Youth and Young Adult Ministries!!

Support the Youth Group!

BOSCOV'S FRIENDS HELPING FRIENDS DAY

This is the first Youth Group fundraiser for the 2013 summer mission trip to Newfane, NY. The Friends Helping Friends pass is a **25% discount shopping pass** for Boscov's Department Store. It can only be used on **Tuesday, October 16** and it's good at any Boscov's.

The shopping passes cost \$5 each with the entire amount donated back to our Youth Group. Please purchase a shopping pass to support our youth group! It's a great way to get a jumpstart on your Christmas shopping with great savings!

The deadline for getting a pass is Sunday, October 14. Please see Kristin Paluszka or any member of the Youth Group to purchase a Boscov's shopping pass and enjoy a great shopping day at Boscov's on Tuesday, October 16.



Report from ABCOPAD Women's Conference Shippensburg, June 7-9, 2012

I went to the ABCOPAD Women's Conference in June with my old church, Calvary Baptist Church in Delaware. I had attended this conference before as a harried working mom with three young kids, and I could not see past college housing and food - what I really needed at that time was a vacation. This time I went eager for spiritual growth. Roughing it out for a weekend was not going to deter me. Even though there were a few good natured complaints from our group, no one lost sight of why we were there.

I came back tired but pumped up for the Lord and what I learned. The theme of the conference was "In the Potter's Hands" and it was a packed weekend. We had a missionary (Corene Smith from Brazil) and an inspiring keynote speaker and Bible teacher (Carol Mcleod), fabulous music, and entertainment. We fit walks in during free times and stayed up late each night munching and chatting about life and what we were learning.



I attended three workshops:

- ♦ **"Chill Out...Time Alone with God"** - This workshop gave me some concrete tactics to find time for devotions, to concentrate despite the distractions and ideas on how to incorporate ACTS (Adoration, Confession, Thanksgiving, Supplication) into my prayers.
- ♦ **"Holy Estrogen! - Making your emotions the holiest part of you!"** – I got lucky as this workshop was led by the keynote speaker. We need to conquer our emotional issues because God has grand plans for us. Each of us is a valuable resource who is able to bring significant change at this historic moment. Inspirational stuff, but controlling one's emotions is easier said than done!
- ♦ **"Moving from Maintenance to Missional: Helping Your Church Become Outward Focused"** - We reviewed forces that are causing main line churches to decline and some ideas to counter them.



The 2012 Regional Project was to support the building of "Rubble Houses" in Haiti. These are homes that are literally built from the earthquake rubble. They cost \$4,000 each and can be erected in a week. ABCOPAD has organized several trips to Haiti to build these houses in 2011 and 2012, and more are planned in 2013.

Overall, it was a terrific weekend and the Board of Christian Education is planning on taking a group from GBCBB to the ABCOPAD Women's Conference next year. **Mark your calendar for June 7-9, 2013 and save the dates!** Mine is already marked!

Irene Philips

GBC College Students—2012

Maddie Bates (Temple University)

Michael Erik

Stephanie Erik (Penn State University, University Park)
137 Sunrise Terrace, State College, PA 16801



Jordan Ledbetter (Penn State University)
135 Sunrise Terrace, State College, PA 16801

Will Lehman

Faith Mohnke (Montgomery Co. Community College)

Emil Ortiz (Philadelphia University)
7002 Redcoat Drive, Flourtown, PA 19031

Gabriel Ortiz (Colorado State University)
118 W. Laurel St., Apt. B, Fort Collins, CO 80521

Reena Philips (Penn State University, University Park)
125 Mifflin Hall, University Park, PA 16802

Sunil Philips (Penn State, Abington)
1151 Canterbury Drive, Lansdale, PA 19446
sbp5058@psu.edu, 215-933-9513

Supriya Philips (Temple University)
Peabody Hall, Room 216, 2015 N. Broad St.
Philadelphia, PA 19122

Colin Phillips (Millersville University)
1 Manor Ave., Millersville, PA 17551
610-755-2123, cwphilli@millersville.edu

Amie Valencia (John Jay College of Criminal Science)
63 Flushing Ave, Unit 280, Brooklyn, NY 11205
718-501-2567 cell

Annie Valencia (Eastern University)
1590 Pulaski Drive, Blue Bell, PA 19422
718-877-2408 cell

Pray for our college students and stay in touch with them. Care Packages will be sent to our college students in November so start saving your shoeboxes!

Parents, if your college student is not on this list, or if an address is missing or incorrect, please contact the church office with the current mailing address, telephone number, and e-mail address.

How Do I Become a Bone Marrow Donor?

Many in the Grace Baptist congregation know of the serious illness of Gregory Hargis, son of Doug and Beth Hargis, and the coming need for him to have a bone marrow donation. Some people have expressed interest in being a donor, not necessarily for Greg but for others needing this life-saving gift. Doug Hargis has passed on the necessary information below and would be happy to tell you more.

Step 1. Join the national bone marrow registry. That can be done either in person or online at the “Be the Match” website:

http://marrow.org/Join/Join_the_Registry.aspx

Whichever way you prefer, go to the website. On the left side of the homepage, click “Join Now” to fill out an online form. You’ll then receive a kit in the mail to submit a “cheek swab” DNA sample for typing purposes.

If you prefer to do the entire process in person, click “Join in Person” on the left side of the home page and you will be able to enter your zip code to find locations to do the paperwork in person and submit the sample for typing (cheek swab or blood sample if you’d rather).

Step 2. Either give a “cheek swab” or blood sample to be typed.

Step 3. Wait for a patient to become a match and respond to the contact at that time.

From one pumpkin to another!

*A woman was asked by a co-worker,
“What’s it like to be a Christian?”*

*The co-worker replied, “It’s like being
a pumpkin.”*



*“God picks you from the patch,
brings you in, and washes all the dirt off of you. Then
He cuts off the top and scoops out all the yucky stuff.”*

*“He removes the seeds of doubt, hate, and greed. Then
he carves you a new smiling face and puts His light in-
side of you to shine for all the world to see.”*

CHURCH NEWS

AROUND the CONGREGATION

Information and announcements for the newsletter are welcome. Please send to the church office by the third Sunday of the month.

Congratulations to Chadd and Robynn Jenkins on the birth of their daughter, Vivien Mae, on September 7 in Philadelphia. Grandparents are **Harry and Sue Jenkins**.

Linda Dietch has completed her Ph.D. in Biblical Studies at Drew University and is currently looking for a full-time teaching job. Congratulations, Linda!

Do you like to run or walk? Why not join "Tim's Noodle Team" at the Race for Hope on Sunday, November 4, 7:30 A.M. at the Philadelphia Art Museum. Help raise money to find a cure for Brain Tumor Cancer. If interested, go to braintumorcommunity.org. Contact **Diane Schwartz** with any questions.

We extend Christian sympathy to the following:

- ♦ **Janet Cazier** and her family on the death of her daughter-in-law, Josie Cazier, on September 3
- ♦ **June Nurnberger** and her family on the death of her husband, **Herman**, on September 20

E-mail change for Kate Stremme:
kstremme17@gmail.com



**Friday
October 5
6-9pm**

Bring your children ages 3-11 for a night of fun at the church!

We will entertain your children so you parents can enjoy a few hours to shop, eat dinner, or just rest.

This is not just for Grace Baptist parents! Let your neighbors know about this event on the first Friday of the month!

Upcoming PNO dates: November 2, December 7, January 4, and February 1

Cost: \$5 per family
Please RSVP by October 3 if you plan to attend
cstauffer@gbcb.org.



Some of our GBCBB Biking Enthusiasts pictured left to right: Betty Helpa, Steve Longenberger, Barbara Longenberger, Diane Schwartz, Don Helpa. Our cyclists were in Lancaster, PA September 8 & 9 and rode in the Lancaster County Classic Bike Ride on September 8. Comments from Diane, "Fun ride, lots of hills and terrible wind, but all in all a great weekend."

Grace Baptist Church of Blue Bell

P.O. Box 122
437 Skippack Pike & Lewis Lane
Blue Bell, PA 19422
215-628-2077 FAX 215-628-1950
www.gbcb.org
E-mail: staff@gbcb.org



😊 If you would prefer not to receive future mailings, call or email and let us know!

GRACE BAPTIST CHURCH OF BLUE BELL

October Birthdays

1	Stephanie Erik	15	Tim Schwartz
1	Kathleen Viall	16	Kim Burke
4	Miriam Camlin	16	Larry Davis
5	Sim Edgar	16	Katie Lehman
7	Jill Rhea	18	Joseph T. Sum
8	Ruth Gardnerr	20	Nelson Hayashida
10	Harriet Rintz	21	Will Bolick
12	Tyler Burke	21	Patrice Erik
12	Jean Kim	21	Nick Salios
14	Barbara Broadbent	23	Heather Choyce
15	Steve Longenberger	24	Jim Burns
15	Linda Allmond	31	Dominic Parker

